

TITLE: SMOKE ALARM
 VERSION: V3.0
 DATE PUBLISHED: 08/11/23

DEFINITION: A self-contained device that detects the presence of smoke, typically as an indicator of fire, and provides a visual or audio signal as an alert.

PURPOSE: To detect the presence of smoke and provide alert.

COMMON COMPONENTS: Plastic shell, Base, Battery, Light, Speaker, Test button, Electronic circuit; Battery backup

LOCATION: ☒ Unit Bedrooms, hallways, kitchens, stairwells.
☒ Inside Hallways, kitchens, stairwells, common areas.
☐ Outside None

MORE INFORMATION:

- Smoke alarm should be installed high on walls or ceilings.
 - If mounted on the ceiling, then it must be greater than 4 inches from the wall.
 - If mounted on the wall, then the top edge of the smoke alarm cannot be closer than 4 inches or greater than 12 inches from the ceiling.
- Smoke alarm should be installed at least 10 feet from a cooking appliance.
- Smoke alarm should not:
 - Be installed near windows, doors, or ducts where drafts might interfere with their operation.
 - Be painted or have decorative stickers or other decorations present.
- The unit must include at least one battery-operated or hard-wired smoke detector, in proper working condition, in the following locations:
 - On each level of the unit;
 - Inside each bedroom;
 - Within 21 feet of any door to a bedroom measured along a path of travel; and
 - Where a smoke detector installed outside a bedroom is separated from an adjacent living area by a door, a smoke detector must also be installed on the living area side of the door.

DEFICIENCY 1: Smoke alarm is not installed where required.

LOCATION: ☒ Unit — Affirmative Habitability Requirement ☒ Inside — Affirmative Habitability Requirement

DEFICIENCY 2: Smoke alarm is obstructed.

LOCATION: ☒ Unit ☒ Inside

DEFICIENCY 3: Smoke alarm does not produce an audio or visual alarm when tested.

LOCATION: ☒ Unit ☒ Inside

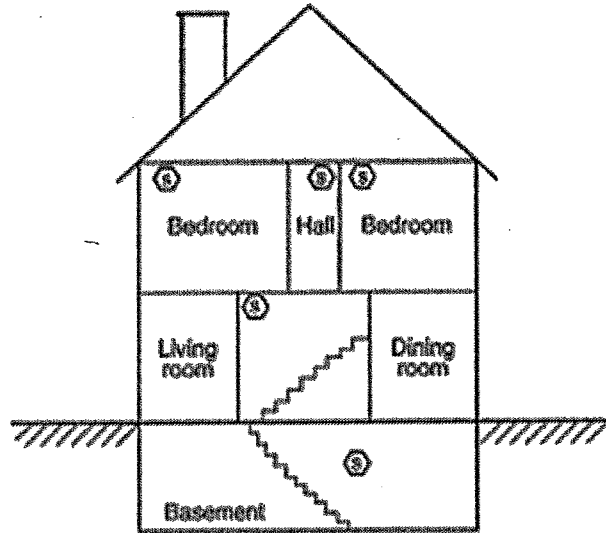
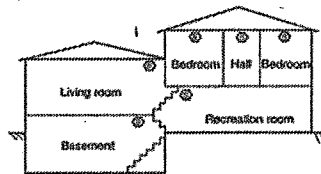


FIGURE A.29.8.1(d) Smoke Alarm Should Be Located on Each Level in Addition to Each Bedroom.



② indicates required smoke alarm

FIGURE A.29.8.1 (a) Split Level Arrangement.

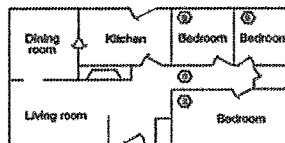


FIGURE A.29.8.1 (b) Smoke Alarm Should Be Located Between Sleeping Area and Rest of Dwelling Unit, as Well as in Each Bedroom.



FIGURE A.29.8.1 (c) In Dwelling Units with More Than One Sleeping Area, Smoke Alarm Should Be Provided to Protect Each Sleeping Area in Addition to Smoke Alarms Required in Bedrooms.

nmd